

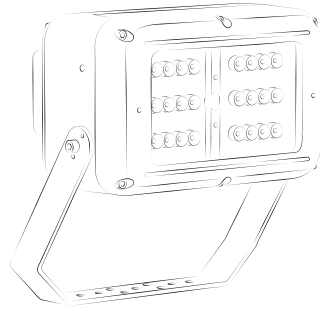


PRODUCT OVERVIEW



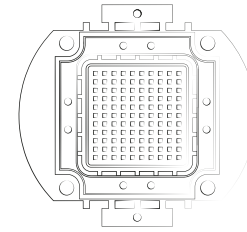
Hazardous Area Luminaires

New High Power Flood & Bay Zone 1 and 2
New Intelligent Emergency



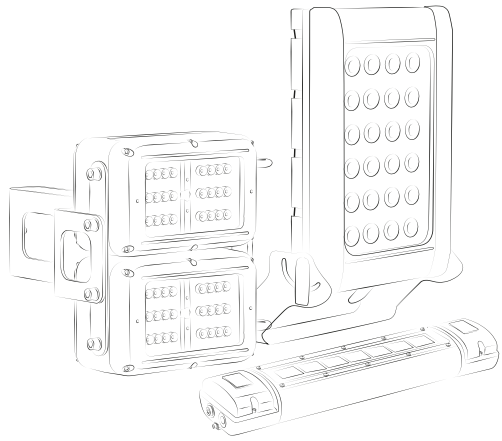
UK Designed and Manufactured

All Raytec hazardous area products are designed and manufactured in the UK and are ATEX and IEC Ex approved. We're so confident in our quality that all our products come with a 5 year warranty. Raytec are also ISO9001 and ISO14001 certified.



Leaders in LED

Founded in 2005, each and every Raytec luminaire produced is built around LED technology, with over half a million products currently in service. We've used our expertise to create SPARTAN - a high performance range of hazardous area lighting which delivers class leading performance and reliability.



Full Product Family

Raytec manufacture a full range of hazardous area lighting with SPARTAN Flood, Linear, Bulkhead, Bay and Crane lighting, meaning there's a solution for any application.

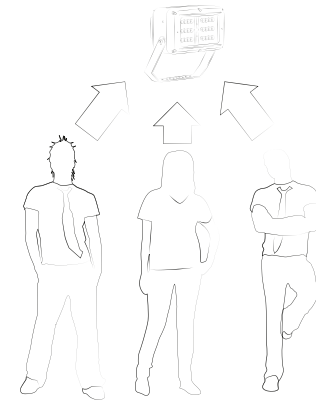
rayTEC[®]



Global Reach

Based at our HQ, near Newcastle, UK, we also have a sales office in Canada.

Our products are successfully deployed globally from the Arctic Circle to the Jungles of Borneo.



Lighting Specialists

Raytec and all our people are 100% focused on lighting. Everything from product design, to manufacture, to sales and after sales service is under one roof at our Global HQ.

FLOOD

Zone 1 6-8

Zone 2 9-11

CRANE

Zone 1 21

Zone 2 21

SPECIALIST PRODUCTS

All Specialist Products 26

LINEAR

Zone 1 14-15

Zone 2 16-17

BAY

Zone 1 23

Zone 2 24

DESIGN SERVICES

All Design Services 27

BULKHEAD

Zone 1 19

Zone 2 19

ACCESSORIES

All Accessories 25

SPARTAN FLOOD



Robust

Housed in marine grade aluminium with A4 stainless steel fasteners and brackets, SPARTAN Flood is IP66 and IP67 rated and can survive in the most extreme environments.

Wide Operating Temperature

An operating temperature range of -50°C to + 55°C* with a T4/T5/T6 rating means SPARTAN Flood is suitable for even the most challenging conditions.

Ultra-Powerful

SPARTAN Flood integrates the latest high power LEDs with Raytec's field proven LED management and optic technology. This delivers a high lumen output of up to 27,500* lumens.

VARIO Technology

SPARTAN Flood is available with a variety of different beam patterns, both circular and elliptical. Elliptical illumination angles can be altered on-site with our unique VARIO interchangeable lens system.

Intelligent Driver

High Power Flood versions feature an intelligent and fully programmable DALI enabled driver for seamless integration into your existing lighting infrastructure.



LED Friendly

SPARTAN Flood uses CoolExtrude™ thermal management technology, ensuring a much cooler LED operating temperature. This provides up to 60% better heat dissipation compared to traditional lighting solutions and allows the product to operate for 10+ years in the most challenging environments.

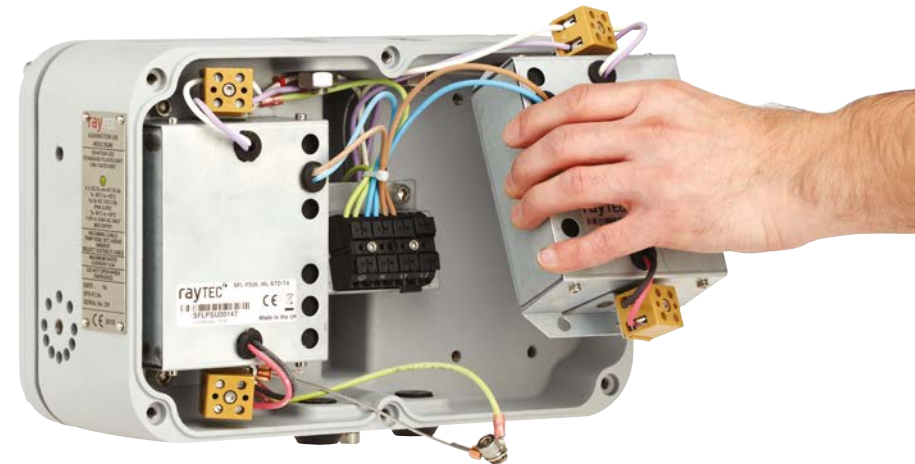


Intelligent Emergency Back-Up

SPARTAN Flood* is available as a high performance emergency variant, using an additional battery back-up module which can deliver up to 100% light output under emergency conditions. All SPARTAN Flood emergency units come with intelligent battery management to proactively monitor and maintain the overall health of your luminaire.

Flexible Installation and Easy Maintenance

The modular design allows great flexibility – the entire PSU chassis can be removed and located remotely at ground level for areas with difficult access. Additionally the individual PSU modules can be easily accessed and replaced making servicing and inspection of all key components quicker and easier.





**SPARTAN
FLOOD HPFL25K**



**SPARTAN
FLOOD HPFL20K**



**SPARTAN
FLOOD HPFL15K**



**SPARTAN
FLOOD HPFL10K**

Certification	ATEX and IEC Ex rated for Zone 1 Gas and Dust ABS Approved	ATEX and IEC Ex rated for Zone 1 Gas and Dust ABS Approved	ATEX and IEC Ex rated for Zone 1 Gas and Dust ABS Approved	ATEX and IEC Ex rated for Zone 1 Gas and Dust ABS Approved
Beam Angles	30° x 30°/ 60° x 60°/ 90° x 90° (circular)	30° x 30°/ 60° x 60°/ 90° x 90° (circular)	30° x 30°/ 60° x 60°/ 90° x 90° (circular)	30° x 30°/ 60° x 60°/ 90° x 90° (circular)
Input	150-264V 50/60Hz AC/DC	150-264V 50/60Hz AC/DC	150-264V 50/60Hz AC/DC	150-264V 50/60Hz AC/DC
Beam Shape	Circular	Circular	Circular	Circular
Beam Angle System	Fixed	Fixed	Fixed	Fixed
Consumption	300W	240W	180W	120W
LED type	Platinum Elite Multi-Core SMT LEDs	Platinum Elite Multi-Core SMT LEDs	Platinum Elite Multi-Core SMT LEDs	Platinum Elite Multi-Core SMT LEDs
Number of LEDs	24	24	24	12
Power output (luminous flux)	23,000 lm	20,000 lm	15,000 lm	10,000 lm
Wavelength	White-Light	White-Light	White-Light	White-Light
IP Rating	IP66 & IP67	IP66 & IP67	IP66 & IP67	IP66 & IP67
Temperature Range	-50°C to +50°C (-58°F to 122°F)	-50°C to +50°C (-58°F to 122°F)	-50°C to +50°C (-58°F to 122°F)	-50°C to +50°C (-58°F to 122°F)
Colour Temperature (White-Light)	5,000K	5,000K	5,000K	5,000K
Colour	Silver (RAL 9006)	Silver (RAL 9006)	Silver (RAL 9006)	Silver (RAL 9006)
Weight	23.5kg (51.8lbs)	23.5kg (51.8lbs)	23.5kg (51.8lbs)	22kg (48.5lbs)
Dimensions	639 x 350 x 215mm (25.2 x 13.8 x 8.5")	639 x 350 x 215mm (25.2 x 13.8 x 8.5")	639 x 350 x 215mm (25.2 x 13.8 x 8.5")	639 x 350 x 215mm (25.2 x 13.8 x 8.5")
Additional Features	CoolExtrude™ Thermal Management Removable PSU and LED modules DALI/Dimming as Standard SMART access wiring system T4 Rating	CoolExtrude™ Thermal Management Removable PSU and LED modules DALI/Dimming as Standard SMART access wiring system T4 Rating	CoolExtrude™ Thermal Management Removable PSU and LED modules DALI/Dimming as Standard SMART access wiring system T4 Rating	CoolExtrude™ Thermal Management Removable PSU and LED modules DALI/Dimming as Standard SMART access wiring system T4 Rating
Intelligent Emergency Battery Back-up				
Battery				
Duration				
Charge Time				
Additional Features				
Part Codes				
Circular beam pattern	SPX-HPFL25K-W-3030 / SPX-HPFL25K-W-6060 SPX-HPFL25K-W-9090	SPX-HPFL20K-W-3030 / SPX-HPFL20K-W-6060 SPX-HPFL20K-W-9090	SPX-HPFL15K-W-3030 / SPX-HPFL15K-W-6060 SPX-HPFL15K-W-9090	SPX-HPFL10K-W-3030 / SPX-HPFL10K-W-6060 SPX-HPFL10K-W-9090
Elliptical beam pattern				



**SPARTAN
FLOOD FL72**



**SPARTAN
FLOOD FL72 Emergency**



**SPARTAN
FLOOD FL48**



**SPARTAN
FLOOD FL48 Emergency**

Certification	ATEX and IEC Ex rated for Zone 1 Gas and Dust UL/CSA including C1D2 and ABS	ATEX and IEC Ex rated for Zone 1 Gas and Dust ABS Approved	ATEX and IEC Ex rated for Zone 1 Gas and Dust UL/CSA including C1D2 and ABS	ATEX and IEC Ex rated for Zone 1 Gas and Dust ABS Approved
Beam Angles	10° x 10° / 30° x 30° / 50° x 50° and 120° x 120° (circular) 35° x 10° / 60 x25° / 80° x 30° and 120° x 50° (elliptical)	10° x 10° / 30° x 30° / 50° x 50° and 120° x 120° (circular) 35° x 10° / 60 x25° / 80° x 30° and 120° x 50° (elliptical)	10° x 10° / 30° x 30° / 50° x 50° and 120° x 120° (circular) 35° x 10° / 60 x25° / 80° x 30° and 120° x 50° (elliptical)	10° x 10° / 30° x 30° / 50° x 50° and 120° x 120° (circular) 35° x 10° / 60 x25° / 80° x 30° and 120° x 50° (elliptical)
Input	110-254V 50/60Hz AC/DC Low voltage: 18-48V AC and 18-69V DC Extra low voltage: 12V AC/DC	110-254V 50/60Hz AC only	110-254V 50/60Hz AC/DC Low voltage: 18-48V AC and 18-69V DC Extra low voltage: 12V AC/DC	110-254V 50/60Hz AC only
Beam Shape	Elliptical or Circular	Elliptical or Circular	Elliptical or Circular	Elliptical or Circular
Beam Angle System	VARIO interchangeable lens system (elliptical) / Fixed (circular)	VARIO interchangeable lens system (elliptical) / Fixed (circular)	VARIO interchangeable lens system (elliptical) / Fixed (circular)	VARIO interchangeable lens system (elliptical) / Fixed (circular)
Consumption	204W	207W	136W	139W
LED type	Platinum Elite SMT LEDs	Platinum Elite SMT LEDs	Platinum Elite SMT LEDs	Platinum Elite SMT LEDs
Number of LEDs	72	72	48	48
Power output (luminous flux)	Up to 15,000 lm - circular beam Up to 12,500 lm - elliptical beam	Up to 15,000 lm - circular beam Up to 12,500 lm - elliptical beam	Up to 10,000 lm – circular beam patterns Up to 9,000 lm – elliptical beam patterns	Up to 10,000 lm – circular beam patterns Up to 9,000 lm – elliptical beam patterns
Wavelength	White-Light (also available in Infra-Red)	White-Light (also available in Infra-Red)	White-Light (also available in Infra-Red)	White-Light (also available in Infra-Red)
IP Rating	IP66 & IP67	IP66 & IP67	IP66 & IP67	IP66 & IP67
Temperature Range	-50°C to +55°C (-58°F to 131°F)	-20°C to +55°C (-4°F to 131°F)	-50°C to +55°C (-58°F to 131°F)	-20°C to +55°C (-4°F to 131°F)
Colour Temperature (White-Light)	6,000K+	6,000K+	6,000K+	6,000K+
Colour	Silver (RAL 9006)	Silver (RAL 9006) Emergency Cover - Red (RAL 3024)	Silver (RAL 9006)	Silver (RAL 9006) Emergency Cover - Red (RAL 3024)
Weight	27kg (59.5lbs)	29Kg (63.9lbs)	16kg (35.2lbs)	20Kg (44lbs)
Dimensions	641 x 416 x 159mm (25.2 x 16.4 x 6.3")	641 x 416 x 220mm (25.2 x 16.4 x 8.6")	291 x 502 x 158mm (11.5 x 19.8x 6.2")	291 x 502 x 219mm (11.5 x 19.8 x 8.6")
Additional Features	Cool Extrude™ Thermal Management Removeable PSU and LED modules Retention point for suspension cord SMART access wiring system Photocell (optional) T4, T5 and T6 Variants (T4 as standard)	Cool Extrude™ Thermal Management Removeable PSU and LED modules Retention point for suspension cord SMART access wiring system T4, T5 and T6 Variants (T4 as standard)	Cool Extrude™ Thermal Management Removeable PSU and LED modules Retention point for suspension cord SMART access wiring system Photocell (optional) T4, T5 and T6 Variants (T4 as standard)	Cool Extrude™ Thermal Management Removeable PSU and LED modules Retention point for suspension cord SMART access wiring system T4, T5 and T6 Variants (T4 as standard)

Intelligent Emergency Battery Back-up

Battery	Ni/Cd 12V 4.5Ah	Ni/Cd 12V 4.5Ah
Duration	Up to 90mins at 17% power (1x battery unit) Other options available	Up to 90mins at 25% power (1x battery unit) Other options available
Charge Time	20 hours	20 hours
Additional Features	Automatic self-testing	Automatic self-testing

Part Codes

Circular beam pattern	SPX-FL72-W-1010 / SPX-FL72-W-3030 SPX-FL72-W-5050 / SPX-FL72-W-120120	SPX-FL72-W-1010-EM17 / SPX-FL72-W-3030-EM17 SPX-FL72-W-5050-EM17 / SPX-FL72-W-120120-EM17	SPX-FL48-W-1010 / SPX-FL48-W-3030 SPX-FL48-W-5050 / SPX-FL48-W-120120	SPX-FL48-W-1010-EM25 / SPX-FL48-W-3030-EM25 SPX-FL48-W-5050-EM25 / SPX-FL48-W-120120-EM25
Elliptical beam pattern	SPX-FL72-W-3510 / SPX-FL72-W-6025 SPX-FL72-W-8030 / SPX-FL72-W-12050	SPX-FL72-W-3510-EM17 / SPX-FL72-W-6025-EM17 SPX-FL72-W-8030-EM17 / SPX-FL72-W-12050-EM17	SPX-FL48-W-3510 / SPX-FL48-W-6025 SPX-FL48-W-8030 / SPX-FL48-W-12050	SPX-FL48-W-3510-EM25 / SPX-FL48-W-6025-EM25 SPX-FL48-W-8030-EM25 / SPX-FL48-W-12050-EM25



**SPARTAN
FLOOD FL24**



**SPARTAN
FLOOD FL24 Emergency**



**SPARTAN
FLOOD FL12**

Certification	ATEX and IEC Ex rated for Zone 1 Gas and Dust UL/CSA including C1D2 and ABS	ATEX and IEC Ex rated for Zone 1 Gas and Dust ABS Approved	ATEX and IEC Ex rated for Zone 1 Gas and Dust UL/CSA including C1D2 and ABS
Beam Angles	10° x 10° / 30° x 30° / 50° x 50° and 120° x 120° (circular) 35° x 10° / 60 x25° / 80° x 30° and 120° x 50° (elliptical)	10° x 10° / 30° x 30° / 50° x 50° and 120° x 120° (circular) 35° x 10° / 60 x25° / 80° x 30° and 120° x 50° (elliptical)	10° x 10° / 30° x 30° / 50° x 50° and 120° x 120° (circular) 35° x 10° / 60 x25° / 80° x 30° and 120° x 50° (elliptical)
Input	110-254V 50/60Hz AC/DC Low voltage: 18-48V AC and 18-69V DC Extra low voltage: 12V AC/DC	110-254V 50/60Hz AC only	110-254V 50/60Hz AC/DC Low voltage: 18-48V AC and 18-69V DC Extra low voltage: 12V AC/DC
Beam Shape	Elliptical or Circular	Elliptical or Circular	Elliptical or Circular
Beam Angle System	VARIO interchangeable lens system (elliptical) / Fixed (circular)	VARIO interchangeable lens system (elliptical) / Fixed (circular)	VARIO interchangeable lens system (elliptical) / Fixed (circular)
Consumption	68W	71W	34W
LED type	Platinum Elite SMT LEDs	Platinum Elite SMT LEDs	Platinum Elite SMT LEDs
Number of LEDs	24	24	12
Power output (luminous flux)	Up to 5,000 lm – circular beam patterns Up to 4,500 lm – elliptical beam patterns	Up to 5,000 lm – circular beam patterns Up to 4,500 lm – elliptical beam patterns	Up to 2,500 lm – circular beam patterns Up to 2,250 lm – elliptical beam patterns
Wavelength	White-Light (also available in Infra-Red)	White-Light (also available in Infra-Red)	White-Light (also available in Infra-Red)
IP Rating	IP66 & IP67	IP66 & IP67	IP66 & IP67
Temperature Range	-50°C to +55°C (-58°F to 131°F)	-20°C to +55°C (-4°F to 131°F)	-50°C to +55°C (-58°F to 131°F)
Colour Temperature (White-Light)	6,000K+	6,000K+	6,000K+
Colour	Silver (RAL 9006)	Silver (RAL 9006) Emergency Cover - Red (RAL 3024)	Silver (RAL 9006)
Weight	8kg (17.6lbs)	10Kg (22lbs)	5kg (11lbs)
Dimensions	291 x 312 x 150mm (11.5 x 12.3 x 6")	291 x 312 x 215mm (11.5 x 12.3 x 8.5")	196 x 274 x 170mm (10.8 x 7.7 x 6.7")
Additional Features	Cool Extrude™ Thermal Management Removeable PSU and LED modules Retention point for suspension cord SMART access wiring system Photocell (optional) T4, T5 and T6 Variants (T4 as standard)	Cool Extrude™ Thermal Management Removeable PSU and LED modules Retention point for suspension cord SMART access wiring system T4, T5 and T6 Variants (T4 as standard)	Cool Extrude™ Thermal Management Removeable PSU and LED modules Retention point for suspension cord SMART access wiring system Photocell (optional) T4, T5 and T6 Variants (T4 as standard)
Intelligent Emergency Battery Back-up			
Battery		Ni/Cd 12V 4.5Ah	
Duration		Up to 90mins at 50% power (1x battery unit) Other options available	
Charge Time		20 hours	
Additional Features		Automatic self-testing	
Part Codes			
Circular beam pattern	SPX-FL24-W-1010 / SPX-FL48-W-3030 SPX-FL24-W-5050 / SPX-FL48-W-120120	SPX-FL24-W-1010-EM50 / SPX-FL24-W-3030-EM50 SPX-FL24-W-5050-EM50 / SPX-FL24-W-120120-EM50	SPX-FL12-W-1010 / SPX-FL12-W-3030 SPX-FL12-W-5050 / SPX-FL12-W-120120
Elliptical beam pattern	SPX-FL24-W-3510 / SPX-FL48-W-6025 SPX-FL24-W-8030 / SPX-FL48-W-12050	SPX-FL24-W-3510-EM50 / SPX-FL24-W-6025-EM50 SPX-FL24-W-8030-EM50 / SPX-FL24-W-12050-EM50	SPX-FL12-W-3510 / SPX-FL12-W-6025 SPX-FL12-W-8030 / SPX-FL12-W-12050



**SPARTAN
FLOOD HPFL25K**



**SPARTAN
FLOOD HPFL20K**



**SPARTAN
FLOOD HPFL15K**



**SPARTAN
FLOOD HPFL10K**

Certification	ATEX and IEC Ex rated for Zone 2 Gas and Dust UL/CSA including C1D2 and ABS	ATEX and IEC Ex rated for Zone 2 Gas and Dust UL/CSA including C1D2 and ABS	ATEX and IEC Ex rated for Zone 2 Gas and Dust UL/CSA including C1D2 and ABS	ATEX and IEC Ex rated for Zone 2 Gas and Dust UL/CSA including C1D2 and ABS
Beam Angles	30° x 30° / 60° x 60° / 90° x 90° (circular)	30° x 30° / 60° x 60° / 90° x 90° (circular)	30° x 30° / 60° x 60° / 90° x 90° (circular)	30° x 30° / 60° x 60° / 90° x 90° (circular)
Input	150-264V 50/60Hz AC only C1D2 variants - 120-254V AC/DC	150-264V 50/60Hz AC only C1D2 variants - 120-254V AC/DC	150-264V 50/60Hz AC only C1D2 variants - 120-254V AC/DC	150-264V 50/60Hz AC only C1D2 variants - 120-254V AC/DC
Beam Shape	Circular	Circular	Circular	Circular
Beam Angle System	Fixed	Fixed	Fixed	Fixed
Consumption	300W	240W	180W	120W
LED type	Platinum Elite Multi-Core SMT LEDs	Platinum Elite Multi-Core SMT LEDs	Platinum Elite Multi-Core SMT LEDs	Platinum Elite Multi-Core SMT LEDs
Number of LEDs	24	24	24	12
Power output (luminous flux)	25,000 lm	22,000 lm	16,500 lm	11,000 lm
Wavelength	White-Light	White-Light	White-Light	White-Light
IP Rating	IP66 & IP67	IP66 & IP67	IP66 & IP67	IP66 & IP67
Temperature Range	-50°C to +50°C (-58°F to 122°F)	-50°C to +50°C (-58°F to 122°F)	-50°C to +50°C (-58°F to 122°F)	-50°C to +50°C (-58°F to 122°F)
Colour Temperature (White-Light)	5,000K	5,000K	5,000K	5,000K
Colour	Front - Dark Grey (RAL 7012) Back - Silver (RAL 9006)	Front - Dark Grey (RAL 7012) Back - Silver (RAL 9006)	Front - Dark Grey (RAL 7012) Back - Silver (RAL 9006)	Front - Dark Grey (RAL 7012) Back - Silver (RAL 9006)
Weight	23.5kg (51.8lbs)	23.5kg (51.8lbs)	23.5kg (51.8lbs)	22kg (48.5lbs)
Dimensions	639 x 350 x 215mm (25.2 x 13.8 x 8.5")	639 x 350 x 215mm (25.2 x 13.8 x 8.5")	639 x 350 x 215mm (25.2 x 13.8 x 8.5")	639 x 350 x 215mm (25.2 x 13.8 x 8.5")
Additional Features	CoolExtrude™ Thermal Management Removable PSU and LED modules DALI/Dimming as Standard SMART access wiring system T4 Rating	CoolExtrude™ Thermal Management Removable PSU and LED modules DALI/Dimming as Standard SMART access wiring system T4 Rating	CoolExtrude™ Thermal Management Removable PSU and LED modules DALI/Dimming as Standard SMART access wiring system T4 Rating	CoolExtrude™ Thermal Management Removable PSU and LED modules DALI/Dimming as Standard SMART access wiring system T4 Rating
Intelligent Emergency Battery Back-up				
Battery				
Duration				
Charge Time				
Additional Features				
Part Codes				
Circular beam pattern	SPZ-HPFL25K-W-3030 / SPZ-HPFL25K-W-6060 SPZ-HPFL25K-W-9090	SPZ-HPFL20K-W-3030 / SPZ-HPFL20K-W-6060 SPZ-HPFL20K-W-9090	SPZ-HPFL15K-W-3030 / SPZ-HPFL15K-W-6060 SPZ-HPFL15K-W-9090	SPZ-HPFL10K-W-3030 / SPZ-HPFL10K-W-6060 SPZ-HPFL10K-W-9090
Elliptical beam pattern				



**SPARTAN
FLOOD FL72**



**SPARTAN
FLOOD FL72 Emergency**



**SPARTAN
FLOOD FL48**



**SPARTAN
FLOOD FL48 Emergency**

Certification	ATEX and IEC Ex rated for Zone 2 Gas and Dust UL/CSA including C1D2 and ABS	ATEX and IEC Ex rated for Zone 2 Gas and Dust ABS Approved	ATEX and IEC Ex rated for Zone 2 Gas and Dust UL/CSA including C1D2 and ABS	ATEX and IEC Ex rated for Zone 2 Gas and Dust ABS Approved
Beam Angles	10° x 10° / 30° x 30° / 50° x 50° and 120° x 120° (circular) 35° x 10° / 60 x25° / 80° x 30° and 120° x 50° (elliptical)	10° x 10° / 30° x 30° / 50° x 50° and 120° x 120° (circular) 35° x 10° / 60 x25° / 80° x 30° and 120° x 50° (elliptical)	10° x 10° / 30° x 30° / 50° x 50° and 120° x 120° (circular) 35° x 10° / 60 x25° / 80° x 30° and 120° x 50° (elliptical)	10° x 10° / 30° x 30° / 50° x 50° and 120° x 120° (circular) 35° x 10° / 60 x25° / 80° x 30° and 120° x 50° (elliptical)
Input	110-254V 50/60Hz AC/DC Low voltage: 18-48V AC and 18-69V DC Extra low voltage: 12V AC/DC	110-254V 50/60Hz AC only	110-254V 50/60Hz AC/DC Low voltage: 18-48V AC and 18-69V DC Extra low voltage: 12V AC/DC	110-254V 50/60Hz AC only
Beam Shape	Elliptical or Circular	Elliptical or Circular	Elliptical or Circular	Elliptical or Circular
Beam Angle System	VARIO interchangeable lens system (elliptical) / Fixed (circular)	VARIO interchangeable lens system (elliptical) / Fixed (circular)	VARIO interchangeable lens system (elliptical) / Fixed (circular)	VARIO interchangeable lens system (elliptical) / Fixed (circular)
Consumption	204W	207W	136W	139W
LED type	Platinum Elite SMT LEDs	Platinum Elite SMT LEDs	Platinum Elite SMT LEDs	Platinum Elite SMT LEDs
Number of LEDs	72	72	48	48
Power output (luminous flux)	Up to 16,500 lm - circular beam Up to 15,000 lm - elliptical beam	Up to 16,500 lm - circular beam Up to 15,000 lm - elliptical beam	Up to 11,000 lm – circular beam patterns Up to 10,000 lm – elliptical beam patterns	Up to 11,000 lm – circular beam patterns Up to 10,000 lm – elliptical beam patterns
Wavelength	White-Light (also available in Infra-Red)	White-Light (also available in Infra-Red)	White-Light (also available in Infra-Red)	White-Light (also available in Infra-Red)
IP Rating	IP66 & IP67	IP66 & IP67	IP66 & IP67	IP66 & IP67
Temperature Range	-50°C to +55°C (-58°F to 131°F)	-20°C to +55°C (-4°F to 131°F)	-50°C to +55°C (-58°F to 131°F)	-20°C to +55°C (-4°F to 131°F)
Colour Temperature (White-Light)	6,000K+	6,000K+	6,000K+	6,000K+
Colour	Front - Dark Grey (RAL 7012) Back - Silver (RAL 9006)	Front - Dark Grey (RAL 7012) Back - Silver (RAL 9006) Emergency Cover - Red (RAL 3024)	Front - Dark Grey (RAL 7012) Back - Silver (RAL 9006)	Front - Dark Grey (RAL 7012) Back - Silver (RAL 9006) Emergency Cover - Red (RAL 3024)
Weight	27kg (59.5lbs)	29Kg (63.9lbs)	16kg (35.2lbs)	20Kg (44lbs)
Dimensions	641 x 416 x 159mm (25.2 x 16.4 x 6.3")	641 x 416 x 220mm (25.2 x 16.4 x 8.6")	291 x 502 x 158mm (11.5 x 19.8x 6.2")	291 x 502 x 219mm (11.5 x 19.8 x 8.6")
Additional Features	Cool Extrude™ Thermal Management Removeable PSU and LED modules Retention point for suspension cord SMART access wiring system Photocell (optional) T4, T5 and T6 Variants (T4 as standard)	Cool Extrude Thermal Management Removeable PSU and LED modules Retention point for suspension cord SMART access wiring system T4, T5 and T6 Variants (T4 as standard)	Cool Extrude™ Thermal Management Removeable PSU and LED modules Retention point for suspension cord SMART access wiring system Photocell (optional) T4, T5 and T6 Variants (T4 as standard)	Cool Extrude Thermal Management Removeable PSU and LED modules Retention point for suspension cord SMART access wiring system T4, T5 and T6 Variants (T4 as standard)

Intelligent Emergency Battery Back-up

Battery		Ni/Cd 12V 4.5Ah		Ni/Cd 12V 4.5Ah
Duration		Up to 90mins at 17% power (1x battery unit) Other options available		Up to 90mins at 25% power (1x battery unit) Other options available
Charge Time		20 hours		20 hours
Additional Features		Automatic self-testing		Automatic self-testing

Part Codes

Circular beam pattern	SPZ-FL72-W-1010 / SPZ-FL72-W-3030 SPZ-FL72-W-5050 / SPZ-FL72-W-120120	SPZ-FL72-W-1010-EM17 / SPZ-FL72-W-3030-EM17 SPZ-FL72-W-5050-EM17 / SPZ-FL72-W-120120-EM17	SPZ-FL48-W-1010 / SPZ-FL48-W-3030 SPZ-FL48-W-5050 / SPZ-FL48-W-120120	SPZ-FL48-W-1010-EM25 / SPZ-FL48-W-3030-EM25 SPZ-FL48-W-5050-EM25 / SPZ-FL48-W-120120-EM25
Elliptical beam pattern	SPZ-FL72-W-3510 / SPZ-FL72-W-6025 SPZ-FL72-W-8030 / SPZ-FL72-W-12050	SPZ-FL72-W-3510-EM17 / SPZ-FL72-W-6025-EM17 SPZ-FL72-W-8030-EM17 / SPZ-FL72-W-12050-EM17	SPZ-FL48-W-3510 / SPZ-FL48-W-6025 SPZ-FL48-W-8030 / SPZ-FL48-W-12050	SPZ-FL48-W-3510-EM25 / SPZ-FL48-W-6025-EM25 SPZ-FL48-W-8030-EM25 / SPZ-FL48-W-12050-EM25



**SPARTAN
FLOOD FL24**



**SPARTAN
FLOOD FL24 Emergency**



**SPARTAN
FLOOD FL12**

Certification	ATEX and IEC Ex rated for Zone 2 Gas and Dust UL/CSA including C1D2 and ABS	ATEX and IEC Ex rated for Zone 2 Gas and Dust ABS Approved	ATEX and IEC Ex rated for Zone 2 Gas and Dust UL/CSA including C1D2 and ABS
Beam Angles	10° x 10° / 30° x 30° / 50° x 50° and 120° x 120° (circular) 35° x 10° / 60 x25° / 80° x 30° and 120° x 50° (elliptical)	10° x 10° / 30° x 30° / 50° x 50° and 120° x 120° (circular) 35° x 10° / 60 x25° / 80° x 30° and 120° x 50° (elliptical)	10° x 10° / 30° x 30° / 50° x 50° and 120° x 120° (circular) 35° x 10° / 60 x25° / 80° x 30° and 120° x 50° (elliptical)
Input	110-254V 50/60Hz AC/DC Low voltage: 18-48V AC and 18-69V DC Extra low voltage: 12V AC/DC	110-254V 50/60Hz AC only	110-254V 50/60Hz AC/DC Low voltage: 18-48V AC and 18-69V DC Extra low voltage: 12V AC/DC
Beam Shape	Elliptical or Circular	Elliptical or Circular	Elliptical or Circular
Beam Angle System	VARIO interchangeable lens system (elliptical) / Fixed (circular)	VARIO interchangeable lens system (elliptical) / Fixed (circular)	VARIO interchangeable lens system (elliptical) / Fixed (circular)
Consumption	68W	71W	34W
LED type	Platinum Elite SMT LEDs	Platinum Elite SMT LEDs	Platinum Elite SMT LEDs
Number of LEDs	24	24	12
Power output (luminous flux)	Up to 5,500 lm – circular beam patterns Up to 5,000 lm – elliptical beam patterns	Up to 5,500 lm – circular beam patterns Up to 5,000 lm – elliptical beam patterns	Up to 2,750 lm – circular beam patterns Up to 2,500 lm – elliptical beam patterns
Wavelength	White-Light (also available in Infra-Red)	White-Light (also available in Infra-Red)	White-Light (also available in Infra-Red)
IP Rating	IP66 & IP67	IP66 & IP67	IP66 & IP67
Temperature Range	-50°C to +55°C (-58°F to 131°F)	-20°C to +55°C (-4°F to 131°F)	-50°C to +55°C (-58°F to 131°F)
Colour Temperature (White-Light)	6,000K+	6,000K+	6,000K+
Colour	Front - Dark Grey (RAL 7012) Back - Silver (RAL 9006)	Front - Dark Grey (RAL 7012) Back - Silver (RAL 9006) Emergency Cover - Red (RAL 3024)	Front - Dark Grey (RAL 7012) Back - Silver (RAL 9006)
Weight	8kg (17.6lbs)	10Kg (22lbs)	5kg (11lbs)
Dimensions	291 x 312 x 150mm (11.5 x 12.3 x 6")	291 x 312 x 215mm (11.5 x 12.3 x 8.5")	196 x 274 x 170mm (10.8 x 7.7 x 6.7")
Additional Features	Cool Extrude™ Thermal Management Removeable PSU and LED modules Retention point for suspension cord SMART access wiring system Photocell (optional) T4, T5 and T6 Variants (T4 as standard)	Cool Extrude Thermal Management Removeable PSU and LED modules Retention point for suspension cord SMART access wiring system T4, T5 and T6 Variants (T4 as standard)	Cool Extrude™ Thermal Management Removeable PSU and LED modules Retention point for suspension cord SMART access wiring system Photocell (optional) T4, T5 and T6 Variants (T4 as standard)

Intelligent Emergency Battery Back-up

Battery	Ni/Cd 12V 4.5Ah
Duration	Up to 90mins at 50% power (1x battery unit) Other options available
Charge Time	20 hours
Additional Features	Automatic self-testing

Part Codes

Circular beam pattern	SPZ-FL24-W-1010 / SPZ-FL48-W-3030 SPZ-FL24-W-5050 / SPZ-FL48-W-120120	SPZ-FL24-W-1010-EM50 / SPZ-FL24-W-3030-EM50 SPZ-FL24-W-5050-EM50 / SPZ-FL24-W-120120-EM50	SPZ-FL12-W-1010 / SPZ-FL12-W-3030 SPZ-FL12-W-5050 / SPZ-FL12-W-120120
Elliptical beam pattern	SPZ-FL24-W-3510 / SPZ-FL48-W-6025 SPZ-FL24-W-8030 / SPZ-FL48-W-12050	SPZ-FL24-W-3510-EM50 / SPZ-FL24-W-6025-EM50 SPZ-FL24-W-8030-EM50 / SPZ-FL24-W-12050-EM50	SPZ-FL12-W-3510 / SPZ-FL12-W-6025 SPZ-FL12-W-8030 / SPZ-FL12-W-12050

SPARTAN

LINEAR



Robust

Housed in marine grade aluminium with stainless steel fasteners and brackets, SPARTAN Linear is IP66 and IP67 rated and can survive in the most extreme environments.

Perfect, Crisp, Even Illumination

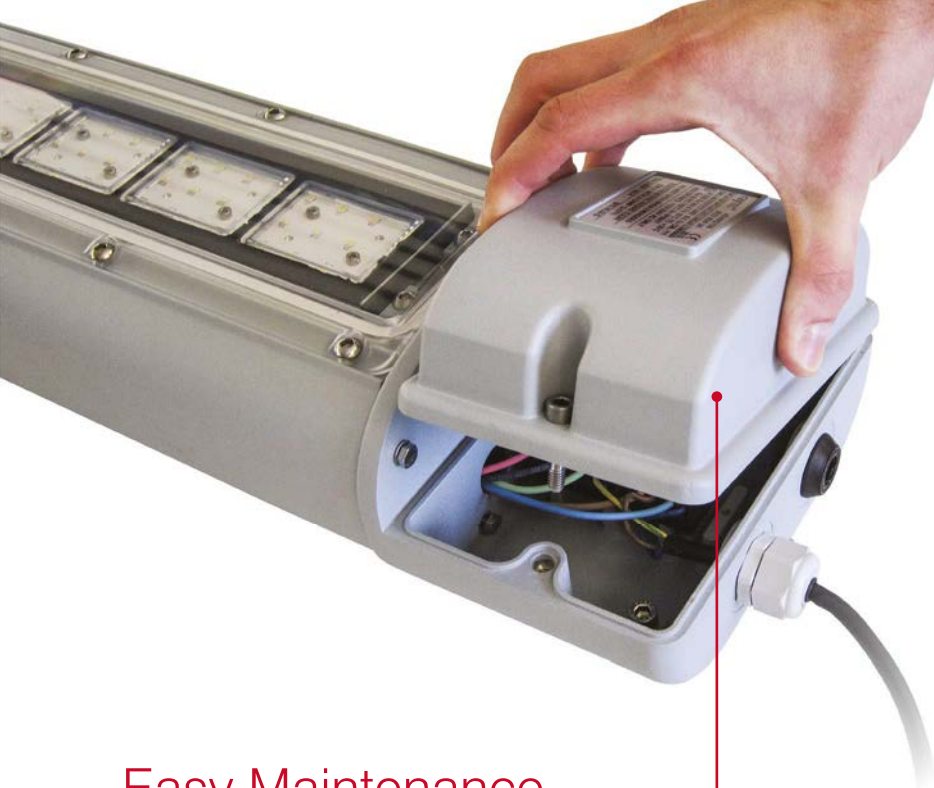
Multiple small profile, medium power SMT LEDs are used to deliver a crisp, uniform illumination without glare.

Intelligent Emergency Back-Up

SPARTAN Linear is available as an emergency variant which can run up to 100% light output under emergency conditions. All SPARTAN Linear emergency units come with intelligent battery management to proactively monitor and maintain the overall health of your luminaire.

Wide Operating Temperature

An operating temperature range of -40°C to $+60^{\circ}\text{C}$ with a T4/T5/T6 rating means SPARTAN Linear is suitable for even the most challenging conditions.



Easy Maintenance

A maintenance friendly modular design allows quick and easy servicing and inspection of all key components including LED and PSU modules. SPARTAN Linear has also been designed without ledges to prevent dust or water from accumulating.



LED Friendly

SPARTAN Linear uses CoolExtrude™ thermal management technology, ensuring a much cooler LED operating temperature. This provides up to 60% better heat dissipation compared to traditional lighting solutions and allows the product to operate for 10+ years in the most challenging environments.

Retrofitable

SPARTAN Linear is a direct replacement for fluorescent fittings, meaning you can upgrade to LED light without complication.





SPARTAN
LINEAR WL168-1500



SPARTAN
LINEAR WL168



SPARTAN
LINEAR WL168 Emergency



Certification	ATEX and IECEx rated for Zone 1 Gas and Dust ABS Approved	ATEX and IECEx rated for Zone 1 Gas and Dust ABS Approved	ATEX and IECEx rated for Zone 1 Gas and Dust ABS Approved
Beam Angles	120°, Equivalent to 2 x 58W T8 Fluorescent	120°, Equivalent to 2 x 36W T8 Fluorescent	120°, Equivalent to 2 x 36W T8 Fluorescent
Input	110-254V 50/60Hz AC/DC Low voltage: 18-48V AC and 18-69V DC Extra low voltage: 12V AC/DC	110-254V 50/60Hz AC/DC Low voltage: 18-48V AC and 18-69V DC Extra low voltage: 12V AC/DC	110-254V 50/60Hz AC only
Consumption	68W	68W	71W
LED type	Platinum Elite SMT LEDs	Platinum Elite SMT LEDs	Platinum Elite SMT LEDs
Number of LEDs	168	168	168
Power output (luminous flux)	Up to 5,000 lm, Equivalent to 2 x 58W T8 Fluorescent	Up to 5,000 lm, Equivalent to 2 x 58W T8 Fluorescent	Up to 5,000 lm, Equivalent to 2 x 58W T8 Fluorescent
Wavelength	White-Light	White-Light	White-Light
IP Rating	IP66 and IP67	IP66 and IP67	IP66 and IP67
Temperature Range	-40°C to +55°C (-40°F to +131°F)	-40°C to +55°C (-40°F to +131°F)	-20°C to +50°C (-4°F to +122°F)
Colour Temperature (White-Light)	6,000K+	6,000K+	6,000K+
Colour	Silver (RAL 9006)	Silver (RAL 9006)	Silver (RAL 9006) Emergency Cover - Red (RAL 3024)
Weight	9kg (19.8lbs)	9kg (19.8lbs)	10kg (22lbs)
Dimensions	1635 x 108 x 174mm (64.4 x 4.3 x 6.9")	1295 x 108 x 174mm (51 x 4.3 x 6.9")	1414 x 108 x 174mm (55.7 x 4.3 x 6.9")
Additional Features	CoolExtrude™ Thermal Management Removable PSU and LED Modules Smart access wiring system Photocell (optional) T4, T5 and T6 variants (T4 as standard)	CoolExtrude™ Thermal Management Removable PSU and LED Modules Smart access wiring system Photocell (optional) T4, T5 and T6 variants (T4 as standard)	CoolExtrude™ Thermal Management Removable PSU and LED Modules Smart access wiring system Photocell (optional) T4, T5 and T6 variants (T4 as standard)

Intelligent Emergency Battery Back-up

Battery			Ni/Cd 12V
Duration			Up to 3hrs @ 25% power Other options available
Charge Time			20 hours
Additional Features			Automatic self-testing

Part Codes

	SPX-WL168-1500	SPX-WL168	SPX-WL168-EM25
--	----------------	-----------	----------------



SPARTAN
LINEAR WL84-1200



SPARTAN
LINEAR WL84-1200 Emergency



SPARTAN
LINEAR WL84



SPARTAN
LINEAR WL84 Emergency



Certification	ATEX and IECEx rated for Zone 1 Gas and Dust ABS Approved	ATEX and IECEx rated for Zone 1 Gas and Dust ABS Approved	ATEX and IECEx rated for Zone 1 Gas and Dust ABS Approved	ATEX and IECEx rated for Zone 1 Gas and Dust ABS Approved
Beam Angles	120°, Equivalent to 2 x 36W T8 Fluorescent	120°, Equivalent to 2 x 36W T8 Fluorescent	120°, Equivalent to 2 x 18W T8 Fluorescent	120°, Equivalent to 2 x 18W T8 Fluorescent
Input	110-254V 50/60Hz AC/DC Low voltage: 18-48V AC and 18-69V DC Extra low voltage: 12V AC/DC	110-254V 50/60Hz AC only	110-254V 50/60Hz AC/DC Low voltage: 18-48V AC and 18-69V DC Extra low voltage: 12V AC/DC	110-254V 50/60Hz AC only
Consumption	34W	34W	34W	34W
LED type	Platinum Elite SMT LEDs	Platinum Elite SMT LEDs	Platinum Elite SMT LEDs	Platinum Elite SMT LEDs
Number of LEDs	84	84	84	84
Power output (luminous flux)	Up to 2,500 lm, Equivalent to 2 x 36W T8 Fluorescent	Up to 2,500 lm, Equivalent to 2 x 36W T8 Fluorescent	Up to 2,500 lm, Equivalent to 2 x 18W T8 Fluorescent	Up to 2,500 lm, Equivalent to 2 x 18W T8 Fluorescent
Wavelength	White-Light	White-Light	White-Light	White-Light
IP Rating	IP66 and IP67	IP66 and IP67	IP66 and IP67	IP66 and IP67
Temperature Range	-40°C to +55°C (-40°F to +131°F)	-20°C to +50°C (-4°F to +122°F)	-40°C to +55°C (-40°F to +131°F)	-20°C to +50°C (-4°F to +122°F)
Colour Temperature (White-Light)	6,000K+	6,000K+	6,000K+	6,000K+
Colour	Silver (RAL 9006)	Silver (RAL 9006) Emergency Cover - Red (RAL 3024)	Silver (RAL 9006)	Silver (RAL 9006) Emergency Cover - Red (RAL 3024)
Weight	6kg (13.2lbs)	7kg (15.4lbs)	6kg (13.2lbs)	7kg (15.4lbs)
Dimensions	1295 x 108 x 174mm (51 x 4.3 x 6.9")	1295 x 108 x 174mm (51 x 4.3 x 6.9")	775x 108 x 174mm (30.5 x 4.3 x 6.9")	775x 108 x 174mm (30.5 x 4.3 x 6.9")
Additional Features	CoolExtrude™ Thermal Management Removable PSU and LED Modules Smart access wiring system Photocell (optional) T4, T5 and T6 variants (T4 as standard)	CoolExtrude™ Thermal Management Removable PSU and LED Modules Smart access wiring system Photocell (optional) T4, T5 and T6 variants (T4 as standard)	CoolExtrude™ Thermal Management Removable PSU and LED Modules Smart access wiring system Photocell (optional) T4, T5 and T6 variants (T4 as standard)	CoolExtrude™ Thermal Management Removable PSU and LED Modules Smart access wiring system Photocell (optional) T4, T5 and T6 variants (T4 as standard)

Intelligent Emergency Battery Back-up

Battery	Ni/Cd 12V	Ni/Cd 12V
Duration	Up to 3hrs @ 25% power Other options available	Up to 3hrs @ 25% power Other options available
Charge Time	20 hours	20 hours
Additional Features	Automatic self-testing	Automatic self-testing

Part Codes

	SPX-WL84-1200	SPX-WL84-1200-EM25	SPX-WL84	SPX-WL84-EM25
--	---------------	--------------------	----------	---------------



SPARTAN
LINEAR WL168-1500



SPARTAN
LINEAR WL168



SPARTAN
LINEAR WL168 Emergency



Certification	ATEX and IECEx rated for Zone 2 Gas and Dust UL/CSA including C1D2 and ABS	ATEX and IECEx rated for Zone 2 Gas and Dust UL/CSA including C1D2 and ABS	ATEX and IECEx rated for Zone 2 Gas and Dust ABS Approved
Beam Angles	120°, Equivalent to 2 x 58W T8 Fluorescent	120°, Equivalent to 2 x 36W T8 Fluorescent	120°, Equivalent to 2 x 36W T8 Fluorescent
Input	110-254V 50/60Hz AC/DC Low voltage: 18-48V AC and 18-69V DC Extra low voltage: 12V AC/DC	110-254V 50/60Hz AC only Low voltage: 18-48V AC and 18-69V DC Extra low voltage: 12V AC/DC	110-254V 50/60Hz AC only
Consumption	68W	68W	71W
LED type	Platinum Elite SMT LEDs	Platinum Elite SMT LEDs	Platinum Elite SMT LEDs
Number of LEDs	168	168	168
Power output (luminous flux)	Up to 6,800 lm, Equivalent to 2 x 58W T8 Fluorescent	Up to 6,800 lm, Equivalent to 2 x 58W T8 Fluorescent	Up to 6,800 lm, Equivalent to 2 x 58W T8 Fluorescent
Wavelength	White-Light	White-Light	White-Light
IP Rating	IP66 and IP67	IP66 and IP67	IP66 and IP67
Temperature Range	-40°C to +55°C (-40°F to +131°F)	-40°C to +55°C (-40°F to +131°F)	-20°C to +50°C (-4°F to +122°F)
Colour Temperature (White-Light)	6,000K+	6,000K+	6,000K+
Colour	Dark Grey (RAL 7012)	Dark Grey (RAL 7012)	Dark Grey (RAL 7012) Emergency Cover - Red (RAL 3024)
Weight	9kg (19.8lbs)	9kg (19.8lbs)	10kg (22lbs)
Dimensions	1635 x 108 x 174mm (64.4 x 4.3 x 6.9")	1295 x 108 x 174mm (51 x 4.3 x 6.9")	1414 x 108 x 174mm (55.7 x 4.3 x 6.9")
Additional Features	CoolExtrude™ Thermal Management Removable PSU and LED Modules Smart access wiring system Photocell (optional) T4, T5 and T6 variants (T4 as standard)	CoolExtrude™ Thermal Management Removable PSU and LED Modules Smart access wiring system Photocell (optional) T4, T5 and T6 variants (T4 as standard)	CoolExtrude™ Thermal Management Removable PSU and LED Modules Smart access wiring system Photocell (optional) T4, T5 and T6 variants (T4 as standard)

Intelligent Emergency Battery Back-up

Battery			Ni/Cd 12V
Duration			Up to 3hrs @ 25% power Other options available
Charge Time			20 hours
Additional Features			Automatic self-testing

Part Codes

	SPZ-WL168-1500	SPZ-WL168	SPZ-WL168-EM25
--	----------------	-----------	----------------



SPARTAN
LINEAR WL84-1200



SPARTAN
LINEAR WL84-1200 Emergency



SPARTAN
LINEAR WL84



SPARTAN
LINEAR WL84 Emergency



Certification	ATEX and IECEx rated for Zone 2 Gas and Dust UL/CSA including C1D2 and ABS	ATEX and IECEx rated for Zone 2 Gas and Dust ABS Approved	ATEX and IECEx rated for Zone 2 Gas and Dust UL/CSA including C1D2 and ABS	ATEX and IECEx rated for Zone 2 Gas and Dust ABS Approved
Beam Angles	120°, Equivalent to 2 x 36W T8 Fluorescent	120°, Equivalent to 2 x 36W T8 Fluorescent	120°, Equivalent to 2 x 18W T8 Fluorescent	120°, Equivalent to 2 x 18W T8 Fluorescent
Input	110-254V 50/60Hz AC/DC Low voltage: 18-48V AC and 18-69V DC Extra low voltage: 12V AC/DC	110-254V 50/60Hz AC only	110-254V 50/60Hz AC/DC Low voltage: 18-48V AC and 18-69V DC Extra low voltage: 12V AC/DC	110-254V 50/60Hz AC only
Consumption	34W	34W	34W	34W
LED type	Platinum Elite SMT LEDs	Platinum Elite SMT LEDs	Platinum Elite SMT LEDs	Platinum Elite SMT LEDs
Number of LEDs	84	84	84	84
Power output (luminous flux)	Up to 3,400 lm, Equivalent to 2 x 36W T8 Fluorescent	Up to 3,400 lm, Equivalent to 2 x 36W T8 Fluorescent	Up to 3,400 lm, Equivalent to 2 x 36W T8 Fluorescent	Up to 3,400 lm, Equivalent to 2 x 36W T8 Fluorescent
Wavelength	White-Light	White-Light	White-Light	White-Light
IP Rating	IP66 and IP67	IP66 and IP67	IP66 and IP67	IP66 and IP67
Temperature Range	-40°C to +55°C (-40°F to +131°F)	-20°C to +50°C (-4°F to +122°F)	-40°C to +55°C (-40°F to +131°F)	-20°C to +50°C (-4°F to +122°F)
Colour Temperature (White-Light)	6,000K+	6,000K+	6,000K+	6,000K+
Colour	Dark Grey (RAL 7012)	Dark Grey (RAL 7012) Emergency Cover - Red (RAL 3024)	Dark Grey (RAL 7012)	Dark Grey (RAL 7012) Emergency Cover - Red (RAL 3024)
Weight	6kg (13.2lbs)	7kg (15.4lbs)	6kg (13.2lbs)	7kg (15.4lbs)
Dimensions	1295 x 108 x 174mm (51 x 4.3 x 6.9")	1295 x 108 x 174mm (51 x 4.3 x 6.9")	775x 108 x 174mm (30.5 x 4.3 x 6.9")	775x 108 x 174mm (30.5 x 4.3 x 6.9")
Additional Features	CoolExtrude™ Thermal Management Removable PSU and LED Modules Smart access wiring system Photocell (optional) T4, T5 and T6 variants (T4 as standard)	CoolExtrude™ Thermal Management Removable PSU and LED Modules Smart access wiring system Photocell (optional) T4, T5 and T6 variants (T4 as standard)	"CoolExtrude™ Thermal Management Removable PSU and LED Modules Smart access wiring system Photocell (optional) T4, T5 and T6 variants (T4 as standard)"	CoolExtrude™ Thermal Management Removable PSU and LED Modules Smart access wiring system Photocell (optional) T4, T5 and T6 variants (T4 as standard)

Intelligent Emergency Battery Back-up

Battery	Ni/Cd 12V	Ni/Cd 12V
Duration	Up to 3hrs @ 25% power Other options available	Up to 3hrs @ 25% power Other options available
Charge Time	20 hours	20 hours
Additional Features	Automatic self-testing	Automatic self-testing

Part Codes

	SPZ-WL84-1200	SPZ-WL84-1200-EM25	SPZ-WL84	SPZ-WL84-EM25
--	---------------	--------------------	----------	---------------

SPARTAN BULKHEAD



LED Friendly

SPARTAN Bulkhead uses CoolExtrude™ thermal management technology, ensuring a much cooler LED operating temperature. This provides up to 60% better heat dissipation compared to traditional lighting solutions and allows the product to operate for 10+ years in the most challenging environments.

Intelligent Emergency Back-Up

SPARTAN Bulkhead is available as an emergency variant, and standard variants can be converted to an emergency fitting at any time on-site, using an additional battery back-up module which can run up to 100% light output under emergency conditions. All SPARTAN Bulkhead emergency units come with intelligent battery management to proactively monitor and maintain the overall health of your luminaire.

Compact

SPARTAN Bulkhead has a compact, low profile design for restricted space applications. It also allows easy access to the back of the unit with rear cable entries, so cabling can be hidden and protected from damage.

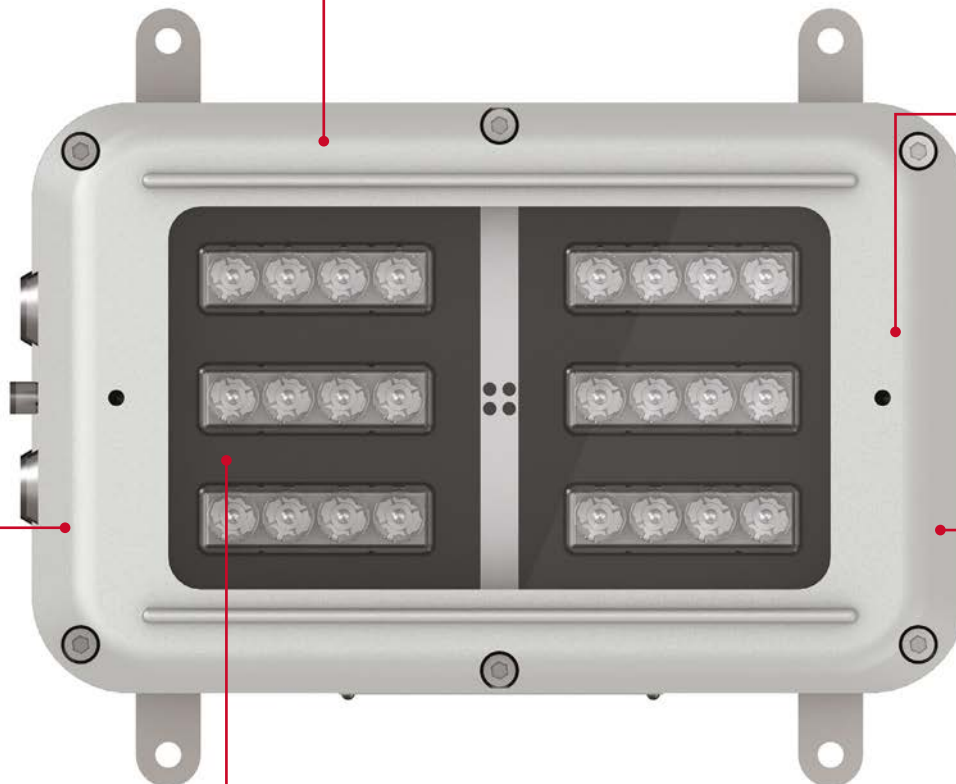
Robust

Housed in marine grade aluminium with stainless steel fasteners and brackets, SPARTAN Bulkhead is IP66 and IP67 rated and can survive in the most extreme environments.

Wide Operating Temperature

An operating temperature range of -50°C to +46°C* with a T4/T5/T6 rating means SPARTAN Bulkhead is suitable for even the most challenging conditions.

** Emergency variants have an operating temperature of -20°C to +46°C*





SPARTAN
BULKHEAD BL24



SPARTAN
BULKHEAD BL24 Emergency



SPARTAN
BULKHEAD BL24



SPARTAN
BULKHEAD BL24 Emergency



Certification	ATEX and IEC Ex rated for Zone 1 Gas and Dust UL/CSA including C1D2 and ABS	ATEX and IEC Ex rated for Zone 1 Gas and Dust ABS Approved	ATEX and IEC Ex rated for Zone 2 Gas and Dust ABS Approved	ATEX and IEC Ex rated for Zone 2 Gas and Dust ABS Approved
Beam Angles	10° x 10° / 30° x 30° / 50° x 50° and 120° x 120° (circular) 35° x 10° / 60 x25° / 80° x 30° and 120° x 50° (elliptical)	10° x 10° / 30° x 30° / 50° x 50° and 120° x 120° (circular) 35° x 10° / 60 x25° / 80° x 30° and 120° x 50° (elliptical)	10° x 10° / 30° x 30° / 50° x 50° and 120° x 120° (circular) 35° x 10° / 60 x25° / 80° x 30° and 120° x 50° (elliptical)	10° x 10° / 30° x 30° / 50° x 50° and 120° x 120° (circular) 35° x 10° / 60 x25° / 80° x 30° and 120° x 50° (elliptical)
Input	110-254V 50/60Hz AC/DC Low voltage: 18-48V AC and 18-69V DC Extra low voltage: 12V AC/DC	110-254V 50/60Hz AC only	110-254V 50/60Hz AC/DC Low voltage: 18-48V AC and 18-69V DC Extra low voltage: 12V AC/DC	110-254V 50/60Hz AC only
Consumption	34W	37W	34W	37W
LED type	Platinum Elite SMT LEDs	Platinum Elite SMT LEDs	Platinum Elite SMT LEDs	Platinum Elite SMT LEDs
Number of LEDs	24	24	24	24
Power output (luminous flux)	Up to 2,500 lm - circular beam patterns Up to 2,250 lm - elliptical beam patterns	Up to 2,500 lm - circular beam patterns Up to 2,250 lm - elliptical beam patterns	Up to 2,750 lm - circular beam patterns Up to 2,500 lm - elliptical beam patterns	Up to 2,750 lm - circular beam patterns Up to 2,500 lm - elliptical beam patterns
Wavelength	White-Light (also available in Infra-Red)	White-Light (also available in Infra-Red)	White-Light (also available in Infra-Red)	White-Light (also available in Infra-Red)
IP Rating	IP66 and IP67	IP66 and IP67	IP66 and IP67	IP66 and IP67
Temperature Range	-50°C to +55°C (-58°F to 131°F)	-20°C to +46°C (-4°F to 114°F)	-50°C to +55°C (-58°F to 131°F)	-20°C to +46°C (-4°F to 114°F)
Colour Temperature (White-Light)	6,000K+	6,000K+	6,000K+	6,000K+
Colour	Silver (RAL 9006)	Silver (RAL 9006)	Dark Grey (RAL 7012)	Dark Grey (RAL 7012)
Weight	5kg (11.0lbs)	6kg (13.2lbs)	5kg (11.0lbs)	6kg (13.2lbs)
Dimensions	288 x 220 x 122mm (11.3 x 8.7 x 4.8")	288 x 220 x 122mm (11.3 x 8.7 x 4.8")	288 x 220 x 122mm (11.3 x 8.7 x 4.8")	288 x 220 x 122mm (11.3 x 8.7 x 4.8")
Additional Features	CoolExtrude™ Thermal Management Removable PSU and LED modules Smart access wiring system Photocell (optional) T4 and T5 Variants (T4 as standard)	CoolExtrude™ Thermal Management Removable PSU and LED modules Smart access wiring system T4 and T5 Variants (T4 as standard)	CoolExtrude™ Thermal Management Removable PSU and LED modules Smart access wiring system Photocell (optional) T4 and T5 Variants (T4 as standard)	CoolExtrude™ Thermal Management Removable PSU and LED modules Smart access wiring system T4 and T5 Variants (T4 as standard)

Intelligent Emergency Battery Back-up

Battery	2.5 Ah	2.5 Ah
Duration	Up to 3hrs @ 25% power Other options available	Up to 3hrs @ 25% power Other options available
Charge Time	20 hours	20 hours
Additional Features	Automatic self-testing	Automatic self-testing

Part Codes

Circular beam pattern	SPX-BL24-W-1010 / SPX-BL24-W-3030 SPX-BL24-W-5050 / SPX-BL24-W-120120	SPX-BL24-W-1010-EM25 / SPX-BL24-W-3030-EM25 SPX-BL24-W-5050-EM25 / SPX-BL24-W-120121-EM25	SPZ-BL24-W-1010 / SPZ-BL24-W-3030 SPZ-BL24-W-5050 / SPZ-BL24-W-120120	SPZ-BL24-W-1010-EM25 / SPZ-BL24-W-3030-EM25 SPZ-BL24-W-5050-EM25 / SPZ-BL24-W-120121-EM25
Elliptical beam pattern	SPX-BL24-W-3510 / SPX-BL24-W-6025 SPX-BL24-W-8030 / SPX-BL24-W-12050	SPX-BL24-W-3510-EM25 / SPX-BL24-W-6025-EM25 SPX-BL24-W-8030-EM25 / SPX-BL24-W-12051-EM25	SPZ-BL24-W-3510 / SPZ-BL24-W-6025 SPZ-BL24-W-8030 / SPZ-BL24-W-12050	SPZ-BL24-W-3510-EM25 / SPZ-BL24-W-6025-EM25 SPZ-BL24-W-8030-EM25 / SPZ-BL24-W-12051-EM25

SPARTAN

CRANE LUMINAIRE



Self-Levelling

A stainless steel rotary damper ensures SPARTAN Crane always illuminates the area directly below the crane and prevents the luminaire swinging as the crane boom moves up and down.

Vibration Resistant

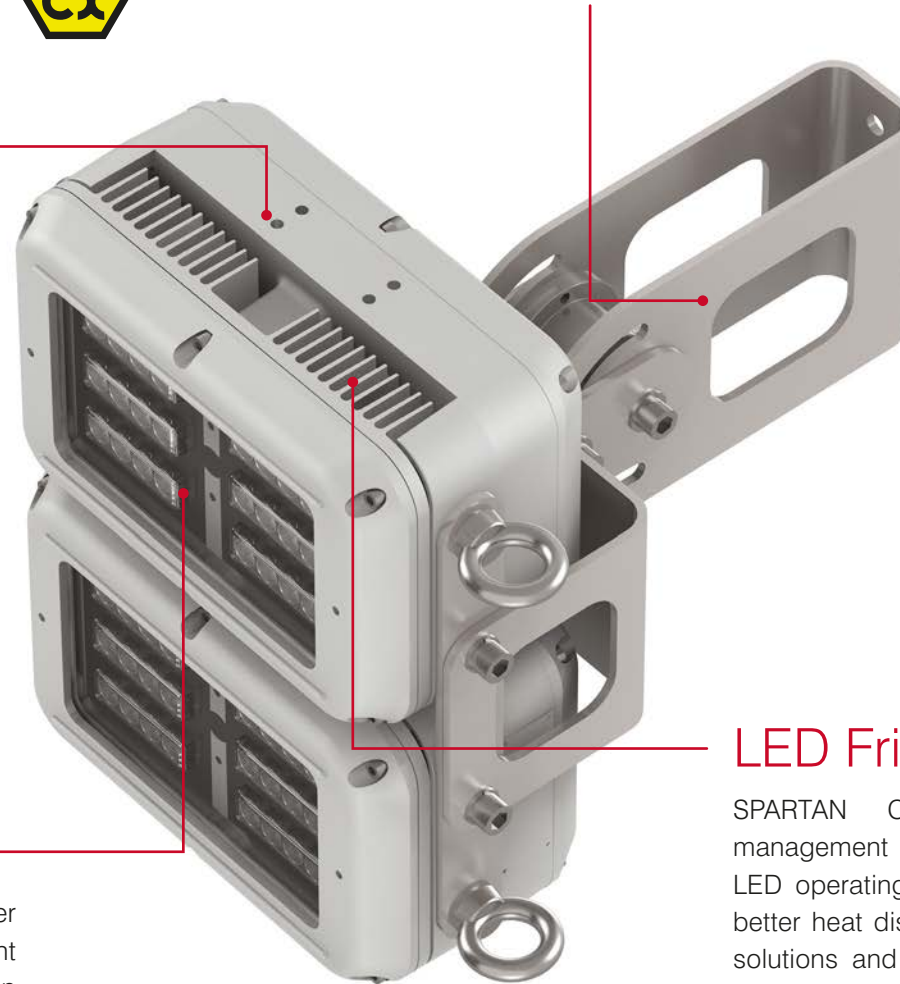
SPARTAN Crane uses high performance surface mount LEDs that are encapsulated in a silicone rubber compound. All power electronics in SPARTAN Crane are also encapsulated. The result is an outstanding resistance to vibration for the most demanding applications.

Ultra-Powerful

SPARTAN Crane integrates the latest high power LEDs with Raytec's field proven LED management and optic technology. This delivers a high lumen output of up to 10,000 lumens even during emergency operation when running off the integral battery.

LED Friendly

SPARTAN Crane uses CoolExtrude™ thermal management technology, ensuring a much cooler LED operating temperature. This provides up to 60% better heat dissipation compared to traditional lighting solutions and allows the product to operate for 10+ years in the most challenging environments.





SPARTAN
CRANE FL48C



SPARTAN
CRANE FL48C

Certification	ATEX and IEC Ex rated for Zone 1 Gas and Dust UL/CSA including C1D2 and ABS	ATEX and IEC Ex rated for Zone 2 Gas and Dust ABS Approved
Beam Angles	10° x 10° (circular)	10° x 10° (circular)
Input	110-254V 50/60Hz AC/DC Low voltage: 18-48V AC and 18-69V DC Extra low voltage: 12V AC/DC	110-254V 50/60Hz AC/DC Low voltage: 18-48V AC and 18-69V DC Extra low voltage: 12V AC/DC
Consumption	136W	136W
LED type	Platinum Elite SMT LEDs	Platinum Elite SMT LEDs
Number of LEDs	48	48
Power output (luminous flux)	Up to 10,000 lm - circular beam patterns Up to 9,000 lm - elliptical beam patterns	Up to 11,000 lm - circular beam patterns Up to 10,000 lm - elliptical beam patterns
Wavelength	White-Light	White-Light
IP Rating	IP66 & IP67	IP66 & IP67
Temperature Range	-10°C to +55°C (14°F to 131°F)	-10°C to +55°C (14°F to 131°F)
Colour Temperature (White-Light)	6,000K+	6,000K+
Colour	Silver (RAL 9006)	Front - Dark Grey (RAL 7012) Back - Silver (RAL 9006)
Weight	25kg (55.1lbs)	25kg (55.1lbs)
Dimensions	312 x 375 x 467mm (12.3 x 14.8 x 13.5")	312 x 375 x 467mm (12.3 x 14.8 x 13.5")
Additional Features	Stainless steel rotary damper 2 x retention points for suspension cord CoolExtrude™ Thermal Management Removable PSU and LED modules SMART access wiring system T4, T5 and T6 Variants (T4 as standard)	Stainless steel rotary damper 2 x retention points for suspension cord CoolExtrude™ Thermal Management Removable PSU and LED modules SMART access wiring system T4, T5 and T6 Variants (T4 as standard)
Part Codes		
Circular beam pattern	SPX-FL48C-W-1010	SPZ-FL48C-W-1010

SPARTAN

BAY



LED Friendly

SPARTAN Bay uses CoolExtrude™ thermal management technology, ensuring a much cooler LED operating temperature. This provides up to 60% better heat dissipation compared to traditional lighting solutions and allows the product to operate for 10+ years in the most challenging environments.

Ultra Powerful

SPARTAN Bay is designed for very large and high hazardous areas which require powerful ceiling mounted White-Light illumination. SPARTAN Bay integrates the latest high power LEDs with Raytec's field proven LED management and optic technology, delivering a high lumen output of up to 27,500 lumens.



Intelligent Driver

SPARTAN Bay features an intelligent and fully programmable DALI enabled driver for seamless integration into your existing lighting infrastructure.

Flexible Installation And Easy Maintenance

The modular design allows great flexibility – the entire PSU chassis can be removed and located remotely at ground level for areas with difficult access. Additionally, the individual PSU modules can be easily accessed and replaced making servicing and inspection of all key components quicker and easier.



SPARTAN
HIGH POWER BAY HPBY25K



SPARTAN
HIGH POWER BAY HPBY20K



SPARTAN
HIGH POWER BAY HPBY15K



SPARTAN
HIGH POWER BAY HPBY10K

Certification	ATEX and IEC Ex rated for Zone 1 Gas and Dust ABS Approved	ATEX and IEC Ex rated for Zone 1 Gas and Dust ABS Approved	ATEX and IEC Ex rated for Zone 1 Gas and Dust ABS Approved	ATEX and IEC Ex rated for Zone 1 Gas and Dust ABS Approved
Angles	30° x 30° / 60° x 60° and 90x 90° (circular)	30° x 30° / 60° x 60° and 90x 90° (circular)	30° x 30° / 60° x 60° and 90x 90° (circular)	30° x 30° / 60° x 60° and 90x 90° (circular)
Input	150-264V 50/60Hz AC/DC	150-264V 50/60Hz AC/DC	150-264V 50/60Hz AC/DC	150-264V 50/60Hz AC/DC
Beam Shape	Circular	Circular	Circular	Circular
Beam Angle System	Fixed	Fixed	Fixed	Fixed
Consumption	300W	240W	180W	120W
LED type	Platinum Elite Multi-Core SMT LEDs	Platinum Elite Multi-Core SMT LEDs	Platinum Elite Multi-Core SMT LEDs	Platinum Elite Multi-Core SMT LEDs
Number of LEDS	24	24	24	12
Power output (luminous flux)	23,000 lm	20,000 lm	15,000 lm	10,000 lm
Wavelength	White-Light	White-Light	White-Light	White-Light
IP Rating	IP66 & IP67	IP66 & IP67	IP66 & IP67	IP66 & IP67
Temperature Range	-50°C to +50°C (-58°F to 122°F)	-50°C to +50°C (-58°F to 122°F)	-50°C to +50°C (-58°F to 122°F)	-50°C to +50°C (-58°F to 122°F)
Colour Temperature (White-Light)	5,000K	5,000K	5,000K	5,000K
Colour	Silver (RAL 9006)	Silver (RAL 9006)	Silver (RAL 9006)	Silver (RAL 9006)
Weight	22.7kg (50lbs)	22.7kg (50lbs)	22.7kg (50lbs)	21kg (46.3lbs)
Dimensions	550 x 353 x 164mm (21.7 x 13.9 x 6.5")	550 x 353 x 164mm (21.7 x 13.9 x 6.5")	550 x 353 x 164mm (21.7 x 13.9 x 6.5")	550 x 353 x 164mm (21.7 x 13.9 x 6.5")
Additional Features	CoolExtrude™ Thermal Management Removable PSU and LED modules DALI/Dimming as Standard SMART access wiring system T4 Rating	CoolExtrude™ Thermal Management Removable PSU and LED modules DALI/Dimming as Standard SMART access wiring system T4 Rating	CoolExtrude™ Thermal Management Removable PSU and LED modules DALI/Dimming as Standard SMART access wiring system T4 Rating	CoolExtrude™ Thermal Management Removable PSU and LED modules DALI/Dimming as Standard SMART access wiring system T4 Rating
Part Codes				
Circular beam pattern	SPX-HPBY25K-W-3030 / SPX-HPBY25K-W-6060 / SPX-HPBY25K-W-9090	SPX-HPBY20K-W-3030 / SPX-HPBY20K-W-6060 / SPX-HPBY20K-W-9090	SPX-HPBY15K-W-3030 / SPX-HPBY15K-W-6060 / SPX-HPBY15K-W-9090	SPX-HPBY10K-W-3030 / SPX-HPBY10K-W-6060 / SPX-HPBY10K-W-9090



SPARTAN
HIGH POWER BAY HPBY25K



SPARTAN
HIGH POWER BAY HPBY20K



SPARTAN
HIGH POWER BAY HPBY15K



SPARTAN
HIGH POWER BAY HPBY10K

Certification	ATEX and IEC Ex rated for Zone 2 Gas and Dust UL/CSA including C1D2 and ABS	ATEX and IEC Ex rated for Zone 2 Gas and Dust UL/CSA including C1D2 and ABS	ATEX and IEC Ex rated for Zone 2 Gas and Dust UL/CSA including C1D2 and ABS	ATEX and IEC Ex rated for Zone 2 Gas and Dust UL/CSA including C1D2 and ABS
Beam Angles	30° x 30° / 60° x 60° and 90x 90° (circular)	30° x 30° / 60° x 60° and 90x 90° (circular)	30° x 30° / 60° x 60° and 90x 90° (circular)	30° x 30° / 60° x 60° and 90x 90° (circular)
Input	150-264V 50/60Hz AC/DC C1D2 variants - 120-254V AC/DC	150-264V 50/60Hz AC/DC C1D2 variants - 120-254V AC/DC	150-264V 50/60Hz AC/DC C1D2 variants - 120-254V AC/DC	150-264V 50/60Hz AC/DC C1D2 variants - 120-254V AC/DC
Beam Shape	Circular	Circular	Circular	Circular
Beam Angle System	Fixed	Fixed	Fixed	Fixed
Consumption	300W	240W	180W	120W
LED type	Platinum Elite Multi-Core SMT LEDs	Platinum Elite Multi-Core SMT LEDs	Platinum Elite Multi-Core SMT LEDs	Platinum Elite Multi-Core SMT LEDs
Number of LEDs	24	24	24	12
Power output (luminous flux)	25,000 lm	22,000 lm	16,500 lm	11,000 lm
Wavelength	White-Light	White-Light	White-Light	White-Light
IP Rating	IP66 & IP67	IP66 & IP67	IP66 & IP67	IP66 & IP67
Temperature Range	-50°C to +50°C (-58°F to 122°F)	-50°C to +50°C (-58°F to 122°F)	-50°C to +50°C (-58°F to 122°F)	-50°C to +50°C (-58°F to 122°F)
Colour Temperature (White-Light)	5,000K	5,000K	5,000K	5,000K
Colour	Front - Dark Grey (RAL 7012) Back - Silver (RAL 9006)	Front - Dark Grey (RAL 7012) Back - Silver (RAL 9006)	Front - Dark Grey (RAL 7012) Back - Silver (RAL 9006)	Front - Dark Grey (RAL 7012) Back - Silver (RAL 9006)
Weight	22.7kg (50lbs)	22.7kg (50lbs)	22.7kg (50lbs)	21kg (46.3lbs)
Dimensions	550 x 353 x 164mm (21.7 x 13.9 x 6.5")	550 x 353 x 164mm (21.7 x 13.9 x 6.5")	550 x 353 x 164mm (21.7 x 13.9 x 6.5")	550 x 353 x 164mm (21.7 x 13.9 x 6.5")
Additional Features	CoolExtrude™ Thermal Management Removable PSU and LED modules DALI/Dimming as Standard SMART access wiring system T4 Rating	CoolExtrude™ Thermal Management Removable PSU and LED modules DALI/Dimming as Standard SMART access wiring system T4 Rating	CoolExtrude™ Thermal Management Removable PSU and LED modules DALI/Dimming as Standard SMART access wiring system T4 Rating	CoolExtrude™ Thermal Management Removable PSU and LED modules DALI/Dimming as Standard SMART access wiring system T4 Rating
Part Codes				
Circular beam pattern	SPZ-HPBY25K-W-3030 / SPZ-HPBY25K-W-6060 / SPZ-HPBY25K-W-9090	SPZ-HPBY20K-W-3030 / SPZ-HPBY20K-W-6060 / SPZ-HPBY20K-W-9090	SPZ-HPBY15K-W-3030 / SPZ-HPBY15K-W-6060 / SPZ-HPBY15K-W-9090	SPZ-HPBY10K-W-3030 / SPZ-HPBY10K-W-6060 / SPZ-HPBY10K-W-9090



Sand Blast Shield Kit

Flood/Bulkhead



Ceiling Mount Kit

Linear



Suspension Cord Kit

Flood/Linear/Bulkhead



Swivel Bracket Mounting Kit

Linear/Bulkhead



Pole Clamp Kit

Linear



M8 Eye Bolt Kit

Flood/Linear



Magnetic Mounting Kit

Linear



Front Guard

Flood/Bulkhead/High Power Flood



Anti-Static Polycarbonate Lens

Linear



Emergency Exit Sign

Bulkhead



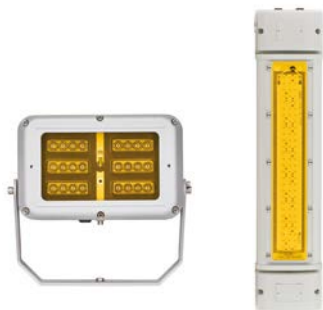
Protective Film

Flood/Linear/Bulkhead



Pole Mounting Kit

Flood



Wildlife Friendly



Safety Shower



Red Light



Infra-Red



Heavy Industrial



Loop in Loop Out



Spigot Mount



IIB/ IIB + H2 Applications



Urban-X Range

Lighting Design Service

Our team of experts can design a lighting scheme tailored to your individual requirements.

This service offers –

- 2D Lighting Design
- 3D Lighting Design

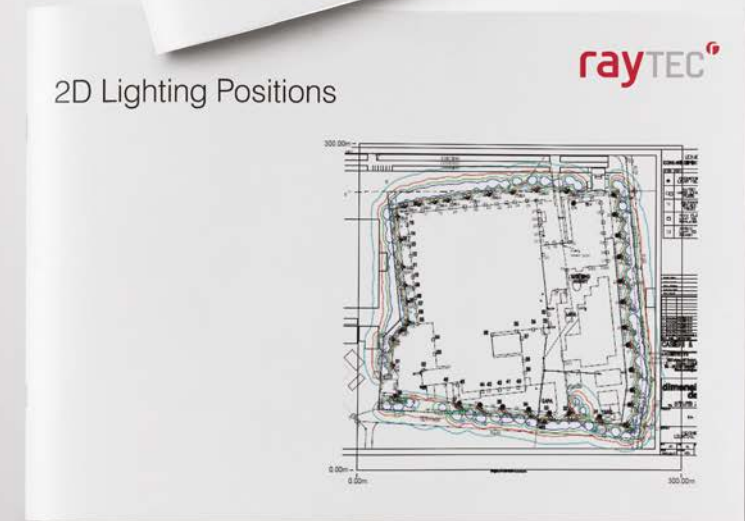
Offering a detailed or full 3D visual representation of the site, our lighting design service will provide recommendations on the product type and number of lights required, as well as the average, maximum and minimum light levels that can be achieved.

Energy and Cost Saving Report

Provides a customer specific survey to summarise energy, CO2 savings and ROI. Cost savings can be shown over 1, 5 and 10 years.

Special Operations Division

Our specialist team can offer custom-built product design tailored for bespoke projects and challenging applications. Give us a call!





Hazardous Area LED Lighting with Worldwide Certification

Global HQ

T: +44 (0) 1670 520055
F: +44 (0) 1670 819760
hazsales@raytecl.com

Americas

T: +1 613 270 9990
T: +1 888 505 8335 (Toll Free)
ussales@raytecl.com

www.raytecl.com